

## ALL OUR YESTERDAYS

It is May and a stroll through the College Courts serves notice that a reluctant Spring is at last upon us. For the majority of junior members, the faint but ever more insistent whiff of examinations is in the air; whilst for those whose biological clocks have at long last registered an end to such anxieties, the scent borne on the warming breeze is that of reunions: a bio-historical synergy of renewal and remembrance: *à la recherche du temps perdu*. As I write, we are about to welcome “home” for lunch some of our oldest members (1948-1952) whilst in September the reunion dinners will see the return of the mere whipper-snappers of 1979-1984.



Arnold Böcklin: *Roman May Festivals*

Reunions are an important and hugely enjoyable part of the College year: an opportunity to renew bonds between member and member, and member and College as well as to take stock: *then* and *now* being more sharply juxtaposed than at almost any other time. Taking human stock is, of course, relatively easy if not always very comforting: the intervening years having contrived to thin the hair even as – in a cruel attempt at compensation – they have conspired to thicken the waist. (“*Yes that’s me third from the left... I used to be quite fit actually*”.) But taking stock of the College is necessarily more difficult. Was it really better then? Was ours the *Golden Age* (of course it was); ours the College’s heyday? Pity then those before or after (and particularly those in residence now) whose experiences – however enjoyable – are surely far less vintage; far less treasurable than our own.

Viewed more objectively, however, this is no simple matter, for each of us has our own *then*, just as each of today’s students has not a single, but multiple, *nows*: their experience of the College – like ours – a kaleidoscope of friendships, events and encounters. Compounding these across members and over time makes it hard to establish with any certainty just what the College was *really* like “*then*”, just as it is impossible to conclude which of our many *thens* is the

one to be savoured, emulated and, looking forward, to have its especial ethos enshrined for posterity.

Such thoughts become ever more insistent as the College faces the challenge of the future. For what does it stand? What and whose heritage is it trying to preserve? Which elements of the past should we protect and which should be consigned to the scrapheap: parts of a Magdalene no longer – if ever – appropriate to a “modern” institution. To Governing Bodies of the day, every major decision and certainly every major change has doubtless seemed risky and perhaps even revolutionary: “*the end of Magdalene as we know it*”. Yet it is extraordinary just how resilient Magdalene has proved to attempts – often threatened or imposed from outside – to alter its fundamental character and purpose. The end of life as we know it has been predicted many times but, as reunions so often underline, *plus ça change, plus c’est la même chose*. Certainly Magdalene must be nurtured if it is to survive the environmental changes to which it will be subject but, like any community, it will flourish – *in sua propria natura* – provided it has the right objectives, the right nourishment and the wholehearted support of its members and friends.

When those redoubtable members come through the gates into First Court for their reunion lunch, they will enter a College recognisably the same as that from which they graduated many years ago; they will see an architecture altered but still substantially unchanged (the very brickwork from which David Roberts once claimed the impregnating character of the College leaked). They will experience that frisson of recognition and of remembrance which makes reunions the life-enhancing events that they are. Yet they will also be entering a College which is adapting, as it has always adapted, to change; which is attuned as much to the future as to the past and which, god-willing, will live on in the hearts and minds of its present resident members who – their examination

“When those redoubtable members come through the gates into First Court for their reunion lunch, they will enter a world recognisably the same as that from which they graduated many years ago ... yet they will also be entering a College which is adapting, as it has always adapted, to change... and which is attuned as much to the future as to the past.”

anxieties long behind them – will recall the especial transforming experience of *their* Magdalene. And, when the springtime of their reunions bursts upon them, they too will re-live it, comparing (with the usual mild disapprobation) their *thens* with the College’s *now*. Different they will surely be; yet – with good will and good judgement – still fundamentally the same.

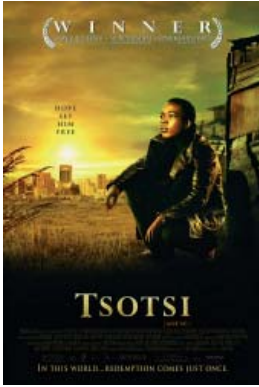
MARK BILLINGE

THE MAGDALENE CAMPAIGN



## MEMBERS' NEWS

### OSCAR BRAVO



**PETER FUDAKOWSKI** (1974) became the College's second ever Oscar winner when his film *Tsotsi* added cinema's highest accolade (for the *Best Foreign Language Film*) to its already impressive roster of

Film Festival awards. Directed by Gavin Hood, *Tsotsi* tells the story of a young South African gang-leader's violent life and his redemption through an unexpected twist of fate during a car theft. Described as "a remarkable achievement" (*The Times*), and as "accomplished and gripping" (*The Independent*) the film uses largely unknown and, in several cases untrained, actors. Such has been the film's impact in South Africa that nationwide celebrations have accompanied its showing. It also prompted ex-President & Honorary Fellow Nelson Mandela (1998) to admit, when meeting the cast, that he could identify with the young Tsotsi, having been an occasional pig stealer in his youth.

### A SPOT OF GARDENING

**OLIVER GOOCH** (1997) until recently Assistant Repetiteur at *The Royal Opera House Covent Garden* – a post created especially for him – has recently been appointed the House's Assistant Conductor. A founder of *Opera East Productions* and a former pupil of both Tanglewood and the *Royal Opera House's Young Artists Programme*, Oliver's rise to prominence in the world of opera has been as rapid as it has been remarkable. In taking up this post, he renews a strong Magdalene connection with Britain's premiere arts institution. **SIR JOHN TOOLEY** (1942) Honorary Fellow (2005) was appointed to the staff of Covent Garden in 1955 and became Assistant General Administrator in 1960. He succeeded Sir David Webster as General Administrator in 1970. During that time he presided

over one of the *Royal Opera's* golden periods graced by the likes of Maria Callas, Birgit Nilsson, Jon Vickers, Sir Georg Solti and Sir Colin Davis. Still active in the arts, Sir John, now a Cambridge resident once again, is Chair of the *Rudolf Nureyev Foundation* and principal artistic adviser to the *Istanbul International Music Festival*. He was recently awarded the *Queen Elizabeth II Coronation Award* from the *Royal Academy of Dance*.



Oliver Gooch: Rising Star of the Opera House



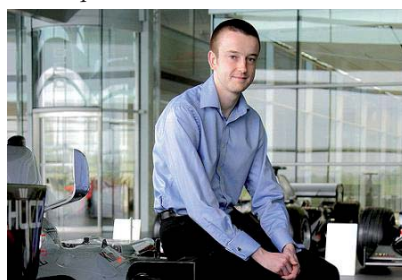
Sir John Tooley receives his award from Dame Antoinette Sibley

### LAWS OF MOTION

**CHRIS LAWS** (1999) read Engineering and is now a Vehicle Dynamics Engineer for the McLaren-Mercedes Formula 1 team, specialising in chassis and suspension modelling. He writes about his life — literally in the fast lane — "I've been there since August 2003 and am still enjoying it. I'm part of the Simulation Department, which comprises about 25 engineers. Cambridge Engineers form a significant proportion of the department!"

I'm generally involved with the assessment and mathematical modelling of new concepts, and analysis of results from lab and track tests. Today is an especially interesting (and long!) day. After a 4:30 start, I drove to Silverstone via our factory in Woking, than had a quick breakfast with Juan-Pablo Montoya and our

Chief Engineer for chassis and suspension. A new suspension geometry has just, this morning, made its track debut and we're hoping it'll give us a decent lap time gain. We'll finish running at 5pm, have a debrief, then I'll go home. Thankfully I'm only visiting the test for one day, so won't miss out on too much sleep!"



Chris Laws with one of the latest McLaren-Mercedes F1 cars in the new Team McLaren Headquarters at Woking

### NEWS IN BRIEF

**DR HELEN LEE** (2003) Honorary Member has been presented with the *Lord Lloyd of Kilgerran Award* by the Foundation for Science and Technology. Dr Lee received the award for her pioneering work developing low cost diagnostic testing kits to combat Chlamydia, HIV and Hepatitis.

**TIM LEIGHTON** (1982) Professor of Ultrasonics and Underwater Acoustics at the University of Southampton, has been awarded the 2006 Institute of Physics *Paterson Medal and Prize* for his contributions to the field of acoustics in liquids. Tim has developed more than 70 pioneering advances, from devices used in hospitals to the world's first count of bubbles in the surf zone (crucial to understanding atmosphere-ocean gas flux, coastal erosion and the optimisation of military sonar).

**JOHN MCPHEE** (1952) has written *Uncommon Carriers* which is due for release next month. This is John's twenty-eighth book. The book is described as "a grown-up version of every young boy's fantasy life, as the peripatetic writer gets to ride in the passenger seat of an 18-wheel truck, tag along on a barge ride up the Illinois River and climb into the cabin of a Union Pacific coal train that's over a mile long."

**HUGH SEBAG-MONTEFIORE** (1974) has written *Dunkirk: Fight to the Last Man* which will be released in June. The book gives voice to the officers and ordinary British and French soldiers who were ordered to hold a series of strong points inland while their comrades were evacuated. Using new material from British, French, Belgian, German, Russian and Czechoslovakian archives, as well as interviews with the last surviving witnesses of the Dunkirk campaign, Hugh chronicles the true story of how the British Army was evacuated from Dunkirk and from France in 1940.

### One Man's Meat

**NICK HAYES** (2001) is the creative spirit behind *Meat Magazine*, an innovative arts journal which has recently published its 4th issue. Described by *The Guardian* as "Lovingly done, incredibly creative and well executed", *Meat Magazine* has been garnering plaudits in a notoriously difficult publishing niche. *Issue 4* — a characteristically lively collection of pieces by young and upcoming authors — is on general sale but is most likely to be found in good bookshops. For further details write to: *Meat Magazine*, 119 Villiers Road, Dollis Hill, London NW2 5QB.



Publish or Perish - Issue 4 of Meat Magazine

## DEVELOPMENT

### From little acorns ...

APRIL SEES THE LAUNCH of the College's new ANNUAL FUND – a fund designed to help meet Magdalene's everyday needs through the regular support of its members. Whilst the campaign to increase the College's ENDOWMENT (and, through it, to restore the College's financial independence and autonomy of decision making) will continue undiminished, this second strand of the *Magdalene Campaign* seeks to increase the number of College members giving small amounts on a monthly basis to a fund designed for immediate use.

In order to continue to meet the everyday cost of educating its students, the College needs, on average, some £1,800,000 per annum. These costs have traditionally been met through the College Fee paid on behalf of each junior member once by local, and now by central, Government and by the various graduate funding bodies. The diminishing value of the publicly-funded College Fee in real terms over the last 6 years, together with the real possibility that

this fee may eventually disappear altogether, means that the College must find other ways of meeting these costs if it is to continue to provide the best education for all of its junior members. Whilst income from the Endowment currently meets the shortfall of almost £600,000 between the costs of education and the public money the College receives to meet them, Magdalene would be in more robust health (and more independent) if it could pay its own way through other means.

If half of the members would consent to give just £20 per month on a regular basis (a cost of only £16 per month or £4 per week to those paying tax) the College would receive (with Gift Aid) some £700,000 per annum: enough to cover the shortfall between fee income and the costs of education. Any subscriptions to the ANNUAL FUND would also count as a contribution towards *Collegiate Cambridge's 800th Anniversary Campaign* and would be recognised as such. If successful, the

ANNUAL FUND would help secure the College's finances for the future and, at the same time, increase significantly the participation rate of the membership as a whole in the *Magdalene Campaign* (another key aim of the *800th Campaign*).

The College recognises that there are many calls upon the loyalty (as well as the pockets) of its members and that many are unable to contribute what they would consider "significant" amounts to the *Campaign*. Through the vehicle of the ANNUAL FUND, every amount becomes significant as the accumulation of many small donations results in a substantial and vital regular income to the College. Each contribution really will "make a difference".

If you would like to help support the College in this way, you are asked to fill in the enclosed Bankers Order and (where appropriate) Gift Aid declaration. Alternatively a Direct Debit can be set up by telephone (01223 332104). All contributions will be acknowledged.

### A MODEL OF EQUITY



EDWARD BENTHALL (1981), a private equity partner in the City of London, has

recently made a substantial gift to the *Magdalene Campaign* in support of student Hardship Bursaries. In making this gift, Edward commented:

*"If Magdalene is to succeed in attracting the most talented students to the College it needs to be able to offer significant financial support to those who need it. Funding bursaries is also a key objective of Cambridge's 800th Campaign, as it enters a new phase of being able to charge more*

*realistic tuition fees. In the long run, funding bursaries is, therefore, critical to attracting the best academics as well as the best students."*

Edward has hosted a number of round-table events for the *800th Campaign* and has also agreed to join the College's Development Committee, whose vital task is to advise and to help steer the *Magdalene Campaign*.



### MAGDALENE ONLINE: [WWW.MAGDALENECAMBRIDGE.COM](http://WWW.MAGDALENECAMBRIDGE.COM)

IN A WORLD INCREASINGLY dominated by the Internet and by email, it is important that Magdalene remains in step. Decisive moves were made in this direction with the acquisition of *webALUMNUS* and the re-design of the Alumnus website. For instance, it is already possible to access news of College events, make bookings & purchases and communicate member to member (as well as member to College) through these facilities. However, many members have urged us to go further, and we are pleased to announce two important new services. Firstly, *Magdalene Matters* and other College publications are now available online at [www.magdalene.cambridge.com/publications.htm](http://www.magdalene.cambridge.com/publications.htm). It is our intention to make *Magdalene Matters* available in future as an email attachment to those who would like it, though this will only be feasible if we can increase both the number

and the accuracy of the email addresses we hold. An initiative to gather the email addresses of all Magdalene members who have one is underway and all members will be contacted shortly.

Secondly, the Development Office has arranged for online (as well as telephone) payment facilities to be available from 1 May onwards. Members who wish to pay for a College event can now do so by major Credit Card over the telephone (01223 332104) or, in the case of donations, can make one-off payments or set up Direct Debits by telephone, or online via CAF (visit [www.magdalene.cambridge.com/giving%201.htm](http://www.magdalene.cambridge.com/giving%201.htm)).

Continuing upgrades to *webALUMNUS* should mean that online Credit Card payment directly to Magdalene will soon be available for both payments and

donations. We hope that members will welcome these initiatives and that they will be encouraged to make use of them.

### CAMPAIGN NEWS

**£9,448,756**

has been given or pledged to the *Magdalene Campaign* by 31 March 2006

Contributions totalling £4,874,221 have been received from 1,662 members of the College, i.e. 29% of the membership

### CAMPAIGN TARGET

**£20,000,000**

# THE COLLEGE

## LOGGAN ON



Andrew Ingamells (centre) presents the finished etching to the Master and to Rachelle Stretch (Development Officer)

IN 1688 DAVID LOGGAN produced one of the defining images of Magdalene: an engraving of First Court together with the then newly-constructed Pepys Building. A mere 318 years later, the College decided that it was perhaps time to update this image; one or two things having changed (not least architecturally) in the interim.

Happily this impulse coincided with an approach from CAPITAL PRINTS LTD whose owner Martin Village was keen to

## Grasps of Love

THE MAGDALENE MUSICAL PRODUCTIONS SOCIETY'S traditional Lent Term offering took place for the first time in the SIR HUMPHREY CRIPPS THEATRE on 9, 10 and 11 March. In a bold (and in the event triumphantly vindicated) departure from tradition, the work performed was not a well-established classic of the musical theatre, but rather an original work written by MMPS members Henry Eliot (2004), Hannah McCloskey (2003) and James Gilder (2004). "The Grasps of Love" a witty take on the timeless story of *Troilus and Cressida*, featured for the first time on one stage a cast of dozens, a pantomime horse and all three of the fable's previous (and slightly better known) authors - Chaucer,

commission renowned artist and engraver Andrew Ingamells to undertake just such a study. This was the happiest of choices as the Master - who already owns examples of Andrew's work - commented: "Andrew's reputation as an architectural draughtsman is well established. It is hard to imagine a more worthy successor to David Loggan." The triumphant result - a Loggan for our times - is now complete and the first copy of a strictly limited edition (175 prints) was presented to the College at a short ceremony on 27 April. A maximum of 50 prints are available for purchase on a first come first served basis at a special price of £195. The remainder will then be available at a cost of £225. *Further details are set out on the enclosed flyer.*

TO RESERVE AN ETCHING please call 020 7704 6808, email:

[magdaleneoffer@capitalprints.com](mailto:magdaleneoffer@capitalprints.com)

or write to Capital Prints, PO Box 2DR, London W1A 2DR.

Shakespeare & Dryden. Four packed houses made clear the enormous enthusiasm for a terrific cast and for this new "classic of the English musical stage". Roll over Porter, Kern & Berlin - your days are clearly numbered.



## MANAGING THE FUTURE

THE COLLEGE IS DELIGHTED to announce that its annual Management Lecture Series (formerly the *GKN Management Lecture Series*) will in future be sponsored by INVESTEC, the specialist international banking group. The agreement, which will last for three years initially, will allow the College to bring leading management experts into Magdalene to lecture, to meet with members and their guests and to discuss - in the widest forum - the many management challenges presented by an increasingly globalised world. It will also help forge closer links between the

College, INVESTEC and the Cambridge Judge Business School. Dr Allegra Hadida, the College's Director of Studies and University Lecturer in Management Studies said, "We are delighted to have the endorsement of such a respected and forward-looking company as INVESTEC and we anticipate, with great confidence, a happy collaboration which we feel sure will bring significant benefit to all parties." The first Magdalene College INVESTEC Lecture in Business will be held early in 2007 and the invited lecturer will be named shortly.

### THE MAKING OF A MODERN LOGGAN

ANDREW INGAMELLS, the artist, explains the stages involved in producing the new etching:

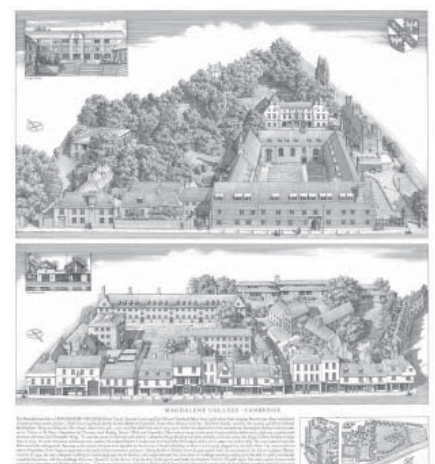
**THE DRAWING:** I began by walking around the College and taking dozens of photographs. These, together with aerial views, became my references for organising the spatial relationships. The drawing itself was done on a sheet of art board using a 0.13 rapidograph pen. I only used lines to build up the image. All shading was by cross-hatching. The drawing took 3 months.

**GRAVURE OR PHOTO-ETCHING:** the completed image was photographed and then transferred onto a copper plate using the gravure (or photo-etching) technique. Now practised by only a handful of etching studios in the UK, this involved making a photographic film of the drawing and placing this onto a copper plate coated with a light-sensitive solution. After exposure in a lightbox, the area of the solution not exposed to the light (that is, the black lines of the drawing) was washed off, while the remaining areas had been turned hard by the light. The plate was then immersed in an acid bath until all the areas of copper left exposed became etched. **TRADITIONAL ETCHING:** not all of my drawn lines appear on the plate from the gravure process, so to complete the plate I applied a hard waxy surface to it (called a 'ground') and blackened it with soot, so it could then be drawn onto with a needle, replacing any missing lines. The plate was then etched in acid as before, and the ground cleaned off.

**PRINTING FROM THE COPPERPLATE:** once the plate was complete it was cleaned and polished. Etching ink was applied and rubbed into the etched areas so as to leave ink only in those places. The plate was then placed on the bed of an intaglio etching press, and paper was passed over it under a giant roller and the inked image from the plate was transferred onto the paper.

"Andrew Ingamells' architectural etchings are usually very austere, straight frontal elevations of building, relying on a good deal of burnishing of the etching plate to capture the tonal qualities of stone and other material. However in his Cambridge College etchings he has deliberately adopted the aerial perspective of Loggan as being the most effective way of presenting an arrangement of buildings, and in doing so relies much more on line drawing, cross-hatching and stippling. It would be fair to say that in acknowledging Loggan's lead in this, Andrew is wholly aware of the tradition of Northern European engraving - Loggan was born in Danzig in 1635 and studied in Denmark (under the Danish Court engraver Simon de Passe) and Holland before he came to England just before the Restoration, and made his name with *Oxonia Illustrata* (1675) and *Cantabrigia Illustrata* (1690)."

## The new etching...



# MEMBERS' OFFERS

## CHAMPAGNE

*Champagne Veuve Clicquot NV Brut* RRP £29.99 – special offer **£23.99**

*CHAMPAGNE LAUNOIS:* A long-established house from the best Grand Cru village in the Cotes des Blancs – “Chardonnay Country”.

*Champagne Launois - Blanc de Blancs, Grand Cru Le Mesnil sur Oger* RRP £23.99 – special offer **£16.00**.

*Champagne Launois - Cuvee Veuve Clemence Blanc de Blancs, Grand Cru Le Mesnil sur Oger* RRP £24.99 – special offer **£16.65**  
Long bottle-age, bruised fruit, for the Champagne specialist.

*Champagne Launois - Blanc de Blancs, Grand Cru Vintage 1999* RRP £26.99 – special offer **£18.00**. A huge wine, like Bollinger used to be. Will age well.

*The Wine Club*, launched last year, goes from strength to strength gathering interested members each month. Its inaugural event — a tutored tasting of *Veuve Clicquot* champagne followed by dinner in the Parlour — was a *sparkling* success and plans for the future include a wine dinner in London in mid June, followed by a whisky tasting in College in late September or early October. Anyone interested in knowing more about these events of the Wine Club in general should contact Luke Webster (1999) at [wineclub@magd.cam.ac.uk](mailto:wineclub@magd.cam.ac.uk)

*Membership of the wine club, which aims to bring together all those with a social interest in wine, is open to all College members and is free to join.*

## ORDERING

All of the featured wines (as well as a range of Magdalene glassware) can be ordered by post, telephone or email from:

*Cambridge Wine Merchants Ltd,  
2 King's Parade Cambridge, CB2 1SJ  
[magdalene@cambridgewine.com](mailto:magdalene@cambridgewine.com)*

*CHAMPAGNE MAZET:* A tiny Premier Cru estate from the heart of “Pinot Country” in the Montagne de Reims.

*Champagne Pascal Mazet Brut NV 1er Cru* RRP £18.99 – special offer **£12.65**  
Dark gold, very toasty/yeasty.

*Champagne Pascal Mazet Extra Brut NV 1er Cru* RRP £20.99 – special offer **£14.00**  
Ultra-dry zero dosage Champagne - as dry as a very dry Chablis.

*Champagne Pascal Mazet Grande Reserve* RRP £23.99 – special offer **£16.00**  
Cunning blend of wines from two excellent vintages - 1995 and 1996. Full bodied.

## FIZZ

*Lindauer New Zealand - Brut NV, Lindauer* RRP £8.49 – special offer **£6.50** - still the best new world fizz at the price

## THE MAGDALENE COLLECTION

The following wines and whiskies have been specially *selected and labelled* for the College and are offered to **ALL COLLEGE MEMBERS** at exceptionally keen prices.

## WHISKY

*Magdalene College Tormore 1990 Single Speyside Malt* A firm favourite in Cambridge. 14 years in a sherry cask have imparted enormous depth of flavour to this whisky. Ideal for those who enjoy big, well-balanced malts. **£22 per bottle**  
*Magdalene College Sound of Islay 1998 Single Islay Malt* A new cask for the College, we think even better than the last. Smoky and peaty with delicious silky texture and a salty tang in the finish.

rel: 01223 309309. Postage and packing is £10 per case (12 bottles) for Wine and Whisky and the minimum order is 12 bottles, which may comprise any mixture of whiskies and wines. P&P for Glassware is £10 per 8 glasses or per decanter.

## STILL WINE

*Grove Mill New Zealand - Grove Mill Chardonnay 2002* RRP £10.99 – special offer **£7.25**. Sauvignon-like on opening, the wine then develops into a stunning Meursault-esque Chardonnay. A versatile dinner wine.

*Cesari Grave Merlot* RRP £5.99 – special offer **£4.50**. Typical far-northern Italian red, green capsicum nose, bitter chocolate palate, dark cherries on the finish.

*Castillo Almansa 2004/5* RRP £7.49 – special offer **£4.99**. Spanish Red. An amazing wine, and one of our very best-sellers. Lots of alcohol and a tiny touch of new oak.

## SINGLE MALT WHISKY

*Ardbeg 10 Year Old* RRP £27.99 – special offer **£22.99** (£20 each if you order six)  
The Uber-peaty Islay malt.

Almost half the price of the Distillery's own release. **£14.99 per bottle**

## WINES (FOR EVERDAY USE)

*Magdalene Collection Merlot*

*Magdalene Collection Semillon Chardonnay*

A pair of well made wines from Southern Australia with plenty of fruit and good concentration of flavour, bearing the **MAGDALENE COLLECTION LABEL** - ideal for the party season. **£5 per bottle**

## MA DINING

Members who hold MA status are reminded of their entitlement to dine on High Table free of charge once each term. Though restrictions apply to certain days (please contact the Development Office to check any specific date) most weekdays during Full Term are available.

In order to encourage MAs to dine, Fridays in the Easter Term and Michaelmas Terms have been designated MA nights. These are: 26 May & 9 June; 13 & 27 October and 10 & 24 November. If you wish to dine on any of these dates please contact the Development Office on 01223 764410 or email [alumni@magd.cam.ac.uk](mailto:alumni@magd.cam.ac.uk).

## THE ART OF SNAIL MAIL

In an era dominated by high speed electronic communication, it does the heart good to enjoy the more stately delights of the well-written (and well-produced) postcard. To cater for those with such a fancy (or simply those who like to collect a good postcard) the College has issued four sets of six postcards which are available to members at a special price of £1.25 per set of 6 or £4.75 for all four sets (plus p&tp). The subject of the sets are: *Historic Magdalene*; *Famous Magdalene Men* from *Vanity Fayre* (Spy Cartoons); *The Magdalene Street Shops* (coloured line drawings) and *Magdalene Sketches* (by Philip Veall).



Sets and other individual cards can be viewed on the website and are available from the Development Office (01223 332104 or [development@magd.cam.ac.uk](mailto:development@magd.cam.ac.uk))

## The ties that bind

Magdalene College **TIES** and Magdalene College **BOW-TIES** will shortly be available direct from the College, priced at £14.99 (tie) and £12.99 (bow tie) plus p&tp.

Other merchandise can be viewed on the Alumnus website which can be found at [www.magdalene.cambridge.com](http://www.magdalene.cambridge.com)

To place an order please contact the Development Office by phone 01223 332104 or email [development@magd.cam.ac.uk](mailto:development@magd.cam.ac.uk) or by writing. Orders will be dispatched on receipt of a cheque or Credit Card details.

# ALUMNI EVENTS

## DATES FOR YOUR DIARY

Please note: full details of all events are available on our website; places for many of them can be reserved on line via [webALUMNUS](http://webALUMNUS)

**Thursday 18 May:** *CAM Lecture and Drinks Reception* 6.30-8.30/9pm New York. Lecture by Dr Mark Billinge *Who cares if the fat lady sings? Theatre-going in 18th & 19th century Italy.*

Followed by drinks. Free to alumni and guests. Reservations are necessary. Top Floor, Reuters Building, 3 Times Square, 7th Avenue between 42nd and 43rd. Contact: Kathy at Cambridge in America: 212-984-0960; [kathy@cantab.org](mailto:kathy@cantab.org)

**Friday 16 June:** *Golf Day, St George's Hill, Weybridge, Surrey.* 7.30am breakfast, 8.30am tee-off, 1pm Lunch. Guests welcome.

Bookings must be received by 23 May. £130. Contact: Miles Broadbent: [miles@milespartnership.com](mailto:miles@milespartnership.com)

**Tuesday 20 June:** *CAM May Week Party*  
Contact: [events@cantab.org](mailto:events@cantab.org)

**Thursday 22 June:** *Tate Britain Visit.* Breakfast

at 8.30am followed by a private viewing of the *John Constable Exhibition.* Tickets £25 each (2 places per member max). Please book by 22 May. Contact: James Roundell:

[james@simondickinson.com](mailto:james@simondickinson.com)

**Thursday 6 July:** *Magdalene Association Chairman's Lunch.* In College. Coffee from 11am, Lunch in Hall at 1pm, followed by a visit to the Fitzwilliam Museum hosted by the Master. Tea from 4pm. Guests welcome. £45 per person. Please book by 5 June. Contact:

Rachelle Stretch: [development@magd.cam.ac.uk](mailto:development@magd.cam.ac.uk)

**Wednesday 28 June:** *Graduands Garden Party* in the Fellows' Garden 4.30pm.

**September (date tbc):** *Hong Kong Dinner* to coincide with the Master's visit. Contact:

Wendy Meharg: [wendymeharg@hotmail.com](mailto:wendymeharg@hotmail.com)

**Friday 3 November:** *15th Annual New York Dinner.* Union Club, 101 East 29th Street. Reception 6.15pm. Dinner 7pm. Invitations will be sent to North American alumni in the summer. Contact: Robert Chartener:

[robert@magdalene.us](mailto:robert@magdalene.us)

**Monday 6 November:** *Toronto Dinner.* Details tbc. Invitations will be sent to North American alumni in the summer.

**REUNIONS:** (see also revised schedule below) Invitations have been sent out for the May Reunion and invitations for the September Reunions will be sent out next month. Please note that the schedule for reunions from 2007 onwards has been revised.

**Saturday 6 May:** *Lunch* 1948-1952.

**Friday 22 September:** *Dinner* 1979-1981

**Saturday 23 September:** *Dinner* 1982-1984

## HONG KONG

**THE DEVELOPMENT DIRECTOR AND THE SENIOR TUTOR** travelled to Hong Kong in early April for the Far Eastern launch of *Collegiate Cambridge's 800th Anniversary Campaign.* They joined more than 20 Magdalene members and their guests (amongst some 400 attendees) for the launch dinner held at the Grand Hyatt Hotel in the heart of the city. Speeches by Minister Mentor of Singapore and Cambridge alumnus Lee Kuan Yew, Dr the Hon Donald Tsang (*Chief Executive of the Hong Kong SAR*), Sir David Lee (*Chair of the Hong Kong Campaign Planning Committee and Chairman of the Friends of Cambridge University in Hong*

*Kong*) and the Vice Chancellor Professor Alison Richard guaranteed a stimulating (if occasionally surprising) evening as each reflected on the global importance of the University, the *800th Campaign* and the future of Cambridge's links with the Far East in general and China in particular.

*Magdalene Asia Pacific* (MAP) is planning a series of follow-up events including a dinner in September 2006 and a drinks reception in January 2007 to coincide with the Master's two visits.

Further details will be available shortly from Wendy Meharg (1999) who can be contacted at: [wendymeharg@hotmail.com](mailto:wendymeharg@hotmail.com)



The Senior Tutor with Ms Carol Fu (2005)



The Vice Chancellor, Lee Kuan Yew and Yan Lung Wong (1983) Secretary for Justice Hong Kong SAR

## Essay Competition

**THERE WERE FIVE ENTRANTS** for the *Association Essay Prize 2004-5* from members spanning a range of matriculation years from 1941-2004. The judging panel was delighted by the very high standard of the entries and found its task of selecting the best from amongst them a very difficult one. However, they were unanimous in selecting as the winner of the prize (and £500) Gwilym Beechey (1956) whose *Samuel Pepys's Musical Acquaintances* particularly impressed by virtue of its originality and scholarship. The Association Committee's thanks go to all of those who entered essays as well as to the panel of judges (in particular Mr David Leonard (1956) who originally proposed the idea). Copies of all of the essays will soon be available on the website. It is hoped that the essay competition will run biannually, with the next in 2006-7.

## REVISED REUNION SCHEDULE

**IN ORDER TO BE ABLE TO OFFER MEMBERS** the opportunity of returning to College with their contemporaries on a more regular basis, the College has taken steps to advance the Reunion cycle by adding a third reunion dinner to the calendar each year. This reunion will take place just after General Admissions on the last Saturday in June each year. The addition of a third dinner should reduce the interval between most member's reunions to about 5 years. The revised schedule is listed below.

YEAR	LUNCH (SAT) MAY	MA CEREMONY	DINNER 1 (SAT) JUNE	DINNER 2 (FRI) SEPT	DINNER 3 (SAT) SEPT
2006	1948-1952	1999		1979-1981	1982-1984
2007	up to 1949	2000	1985-1987	1988-1990	1991-1993
2008	1950-1954	2001	1994-1996	1997-1998	up to 1959
2009	up to 1951	2002	1999-2000	1960-1964	1965-1969
2010	1952-1956	2003	1970-1972	1973-1975	1976-1978
2011	up to 1953	2004	2001-2002	1979-1981	1982-1984
2012	1954-1958	2005	1985-1987	1988-1990	1991-1993

If any member has concerns or questions about the date of their reunion (which is based upon the year of matriculation) they should contact the Development Office on 01223 332104 or email: [development@magd.cam.ac.uk](mailto:development@magd.cam.ac.uk)